

SCUDDER FALLS BRIDGE REPLACEMENT PROJECT



FOR IMMEDIATE RELEASE

October 26, 2017

Contact: Joe Donnelly, Pete Peterson
Phone: (215) 862-7693, 215-990-8928

17-HOUR DETOUR SCHEDULED LATE FRIDAY TO SATURDAY AFTERNOON FOR ROUTE 29 NORTH RAMP TO I-95 NORTH

Traffic Detour to I-95N Via West Upper Ferry Rd. and Route 175/River Rd.

EWING, NJ – Route 29 northbound motorists will encounter a 17-hour ramp closure and detour in order to access I-95 northbound late Friday night through Saturday afternoon, the Delaware River Joint Toll Bridge Commission announced today.

The Route 29 northbound on-ramp to I-95 northbound is scheduled to be closed from 11 p.m. Friday, October 27, to 4 p.m. Saturday, October 28. The ramp is part of the sprawling interchange of the two highways (Exit 1) on the New Jersey side of the Scudder Falls (I-95) Bridge.

During the closure period, signs will be posted – in advance of the interchange – to direct potentially affected Route 29 motorists to I-95 north via a detour route involving a right turn onto West Upper Ferry Road followed by a left turn onto Route 175/River Road. (A schematic map of the posted detour route is attached.)

The ramp closure and detour is needed to allow for realignment of temporary I-95/Route 29 interchange ramps as part of the ongoing Scudder Falls Bridge Replacement Project.

The scheduled restrictions are subject to change due to weather, emergency, and traffic considerations. Motorists are urged to reduce speeds and exercise caution when travelling through active work zones.

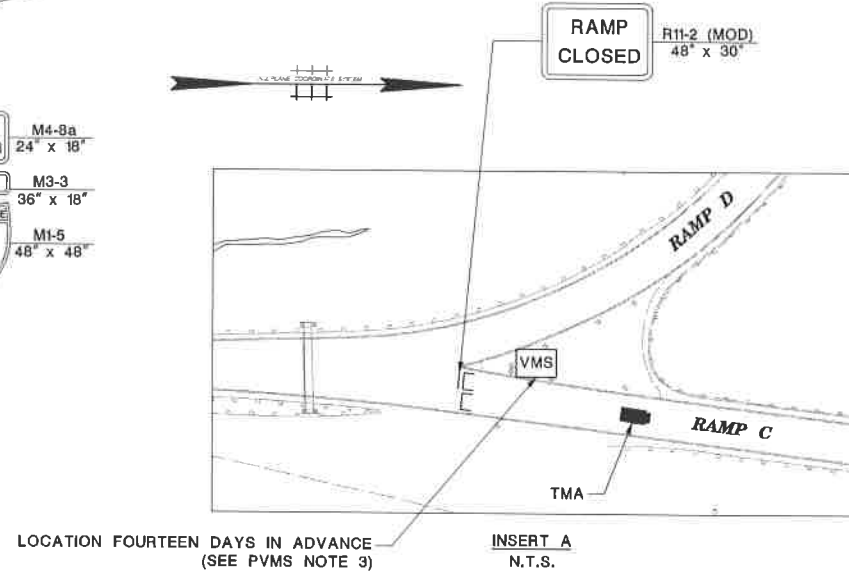
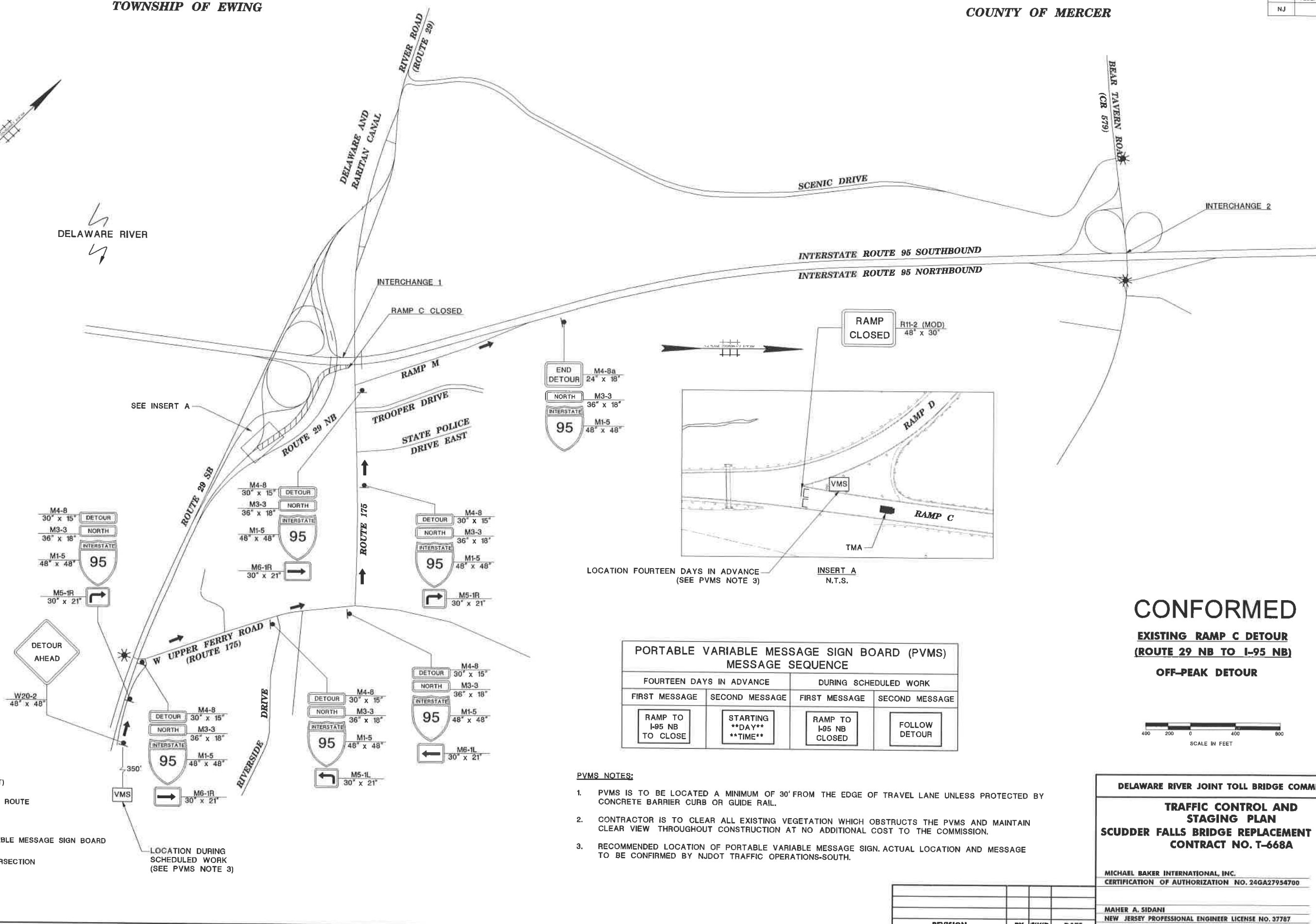
More information and videos on the bridge replacement project are available at www.scudderfallsbridge.com.



Delaware River
Joint Toll Bridge
Commission



DELaware RIVER



CONFORMED
EXISTING RAMP C DETOUR
(ROUTE 29 NB TO I-95 NB)
OFF-PEAK DETOUR

PORTABLE VARIABLE MESSAGE SIGN BOARD (PVMS) MESSAGE SEQUENCE

FOURTEEN DAYS IN ADVANCE		DURING SCHEDULED WORK	
FIRST MESSAGE	SECOND MESSAGE	FIRST MESSAGE	SECOND MESSAGE
RAMP TO I-95 NB TO CLOSE	STARTING **DAY** **TIME**	RAMP TO I-95 NB CLOSED	FOLLOW DETOUR



- LEGEND: (THIS SHEET)**
- VEHICLE DETOUR ROUTE
 - DETOUR SIGN
 - PORTABLE VARIABLE MESSAGE SIGN BOARD
 - SIGNALIZED INTERSECTION
 - WORK AREA
- LOCATION DURING SCHEDULED WORK (SEE PVMS NOTE 3)

- PVMS NOTES:**
- PVMS IS TO BE LOCATED A MINIMUM OF 30' FROM THE EDGE OF TRAVEL LANE UNLESS PROTECTED BY CONCRETE BARRIER CURB OR GUIDE RAIL.
 - CONTRACTOR IS TO CLEAR ALL EXISTING VEGETATION WHICH OBSTRUCTS THE PVMS AND MAINTAIN CLEAR VIEW THROUGHOUT CONSTRUCTION AT NO ADDITIONAL COST TO THE COMMISSION.
 - RECOMMENDED LOCATION OF PORTABLE VARIABLE MESSAGE SIGN, ACTUAL LOCATION AND MESSAGE TO BE CONFIRMED BY NJDOT TRAFFIC OPERATIONS-SOUTH.

DELAWARE RIVER JOINT TOLL BRIDGE COMMISSION

TRAFFIC CONTROL AND STAGING PLAN

SCUDDER FALLS BRIDGE REPLACEMENT PROJECT

CONTRACT NO. T-668A

MICHAEL BAKER INTERNATIONAL, INC.
 CERTIFICATION OF AUTHORIZATION NO. 24GA27954700

MAHER A. SIDANI
 NEW JERSEY PROFESSIONAL ENGINEER LICENSE NO. 37787

REVISION	BY	C/K'D	DATE

USER: iwork DATE & TIME: 05-SEP-2006 07:38
 PROJECT: C:\DD\Plan\SR-NJ\44\space\Plan\4445 TC-090_NJ_RAMP_C_DETOUT.dgn
 PROJECT: C:\DD\Plan\SR-NJ\44\space\Plan\4445 TC-090_NJ_RAMP_C_DETOUT.dgn
 PROJECT: C:\DD\Plan\SR-NJ\44\space\Plan\4445 TC-090_NJ_RAMP_C_DETOUT.dgn